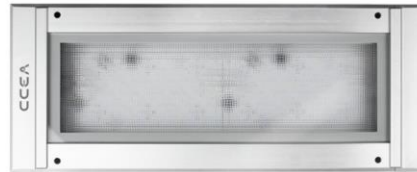


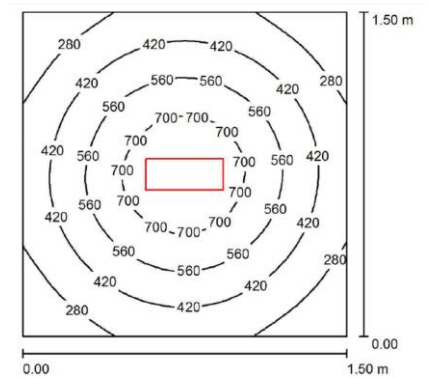
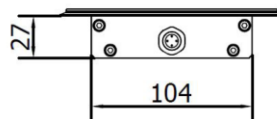
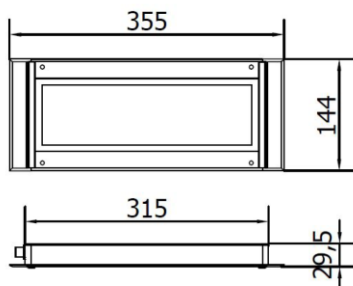
AN0231S02 ANTARIO



PRODUCT FEATURES

Power usage	26,5 W
Power supply	24 Vdc
Light source	LED
Electrical connection	M12-A 4P Male
Color temperature	6500 K, CRI 80
Luminous flux	2400 lm
Efficiency	91 lm/W
Light beam angle	120°
Housing	Anodized aluminum
Front protection	Tempered glass
Protection index	IP67
Impact resistance	IK06
Operating temperature	-20 °C to + 45 °C (-04 °F to +113 °F)
Weight	1,40 kg (3,09 lb)
Agency approvals	CE, RoHS

Mounting



NOTE: Installation Height: 1m