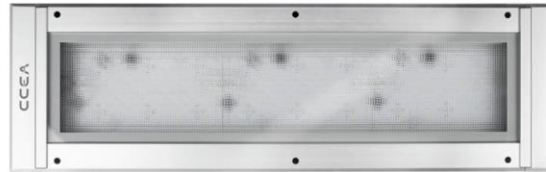


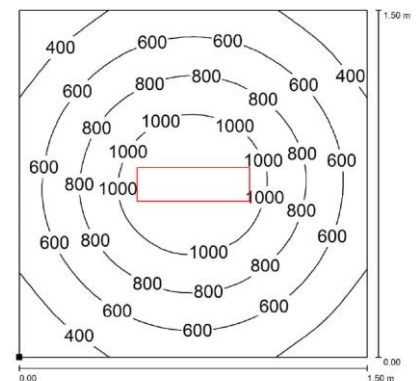
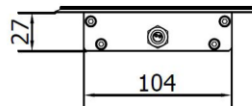
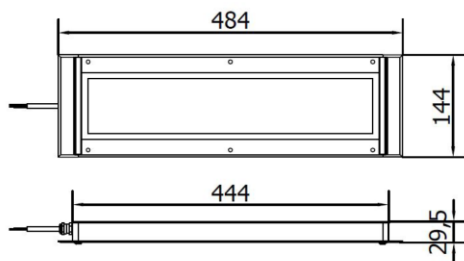
AN0331S01 ANTARIO



PRODUCT FEATURES

Power usage	40 W
Power supply	24 Vdc
Light source	LED
Electrical connection	Cable 3 m (10 ft)
Color temperature	6500 K, CRI 80
Luminous flux	3600 lm
Efficiency	90 lm/W
Light beam angle	120°
Housing	Anodized aluminum
Front protection	Tempered glass
Protection index	IP67
Impact resistance	Ref EN60079-0:2012
Operating temperature	-20 °C to + 45 °C (-04 °F to +113 °F)
Weight	2,30 kg (5,07 lb)
Agency approvals	CE, RoHS, ATEX zone 2 & 22

Mounting



NOTE: Installation Height: 1m