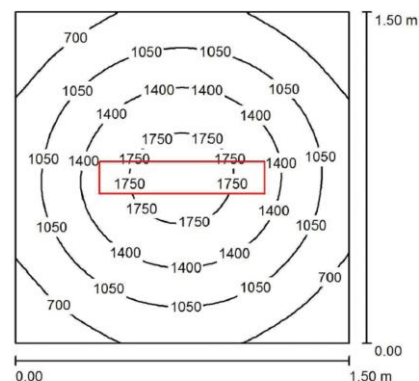
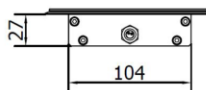
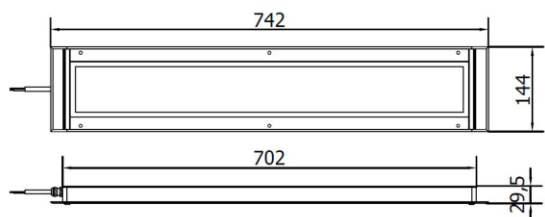


PRODUCT FEATURES

Power usage	67 W
Power supply	24 Vdc
Light source	LED
Electrical connection	Cable 3 m (10 ft)
Color temperature	6500 K, CRI 80
Luminous flux	6150 lm
Efficiency	92 lm/W
Light beam angle	120°
Housing	Anodized aluminum
Front protection	Tempered glass
Protection index	IP67
Impact resistance	Ref EN60079-0:2012
Operating temperature	-20 °C to + 45 °C (-04 °F to +113 °F)
Weight	3,50 kg (7,72 lb)
Agency approvals	CE, RoHS, ATEX zone 2 & 22

Mounting



NOTE: Installation Height: 1m