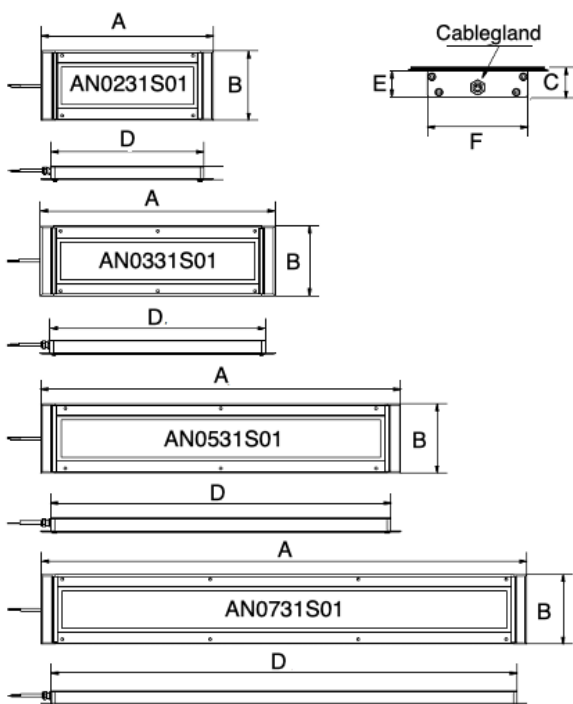




ANTARIO is the **Recessed Machine Light** designed with the State-of-the-art LED technology built-in a robust anodized aluminum housing, impenetrable to oil, coolants, emulsions, and Dust. The front Hardened safety glass is Debris resistant to IK07. The new concept of the glare-free optic diffuser combined with the designed circuits makes the Antario the most efficient and reliable luminaire series with the safest light output. Available in different sizes, Antario is the flush-mounted light solution that offers the highest illuminance in the slimmest casing for even the toughest CNC Machines, manufacturing, and automation applications.

- Robust anodized aluminum Housing
- Slim flush-mounted casing only 1.07" (27 mm)
- Flexible with 4 sizes and power usage
- IR / UV content, Flicker -free light
- Front hardened safety glass
- Resistant to liquids and dust IP68-IP69, including high-pressure washing applications
- 10 ft (3 m) Cord Standard construction – Custom cable lengths on request
- Suitable for wet locations
- 120° beam angle, glare-free diffuser
- 60000 h < (L 70) Maintenance-free
- Daylight - CRI 85
- 24 Vdc Power Supply Integrated
- ATEX Zone 2, 22
- Fast installation

DIMENSIONS



SIZE inches						
Model	A	B	C	D	E	F
AN0231S01	13.98	5.67	1.16	12.40	1.07	4.10
AN0331S01	19.06			17.48		
AN0531S01	29.22			27.64		
AN0731S01	39.37			37.80		

SIZE millimeters (mm)						
Model	A	B	C	D	E	F
AN0231S01	355	144	29.5	315	27	104
AN0331S01	484			444		
AN0531S01	742			702		
AN0731S01	1000			960		

MECHANICAL FEATURES

Model	AN0231S01	AN0331S01	AN0531S01	AN0721S01
Casing Material	Aluminum			
Side Enclosers	Aluminum			
Surface Treatment	Silver anodization			
Front Glass	0.16" (4 mm) Hardened safety glass			
Weight	~ 3.55 lbs. ~ 1,60 kg	~ 5.10 lbs. ~ 2,30 kg	~ 7.70 lbs. ~ 3,50 kg	~ 9.95 lbs. ~ 4,50 kg
Protection Index	IP68- IP69			
Impact Resistance	under EN60079-0:2012 (Compatible with ANSI RP27.1)			
Operating Temperature	-20 °C to + 45 °C			
Installation	4 X 8-32 (US) or M5 screws	6 X 8-32 (US) or M5 screws	6 X 8-32 (US) or M5 screws	8 X 8-32 (US) or M5 screws

Choose the length of the screw according to the application, and the thickness of the installation surface.

ELECTRICAL FEATURES

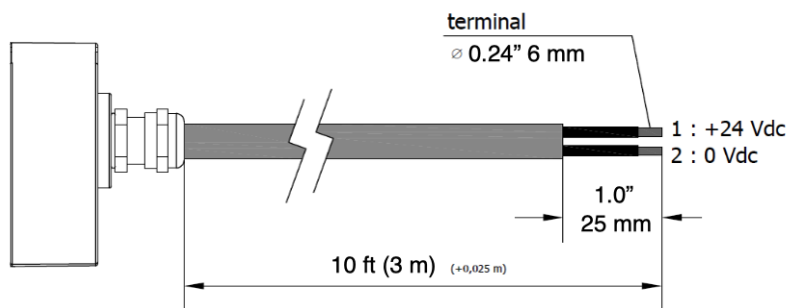
Model	AN0231S01	AN0331S01	AN0531S01	AN0721S01
Power usage	26,5 W	40 W	66,5 W	93 W
Power Supply	22 ÷ 36 Vdc			
Power Protection	Reverse polarity Protection			
Electrical Connection	10-foot Cord - Cable 3 m			
Insulation Class	Class III (SELV)			
Efficiency Class	A/A+/A++/A+++ (built-in LED module) compliant with UE Law No. 874/2012			

CONNECTION with standard power cord

AWG 20, 2 conductors, cross section of 0.032" (0.75 mm²) 10-foot / 3 m

Wire

Connection



1 Black

(+) 24 Vdc

2 Black

(-) 0

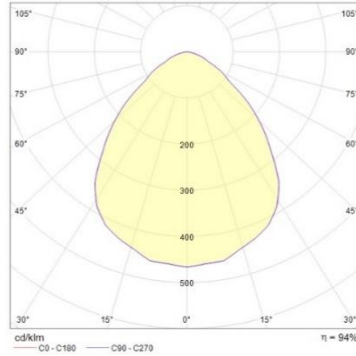
OPTICAL FEATURES

Model	Number and Type of LED	LED Lifespan	Light Color	CRI	Beam Angle	Luminous Flux	Efficiency
AN0231S01	72 Mid Power LED	60.000 < L70*	6500 K	85	120 °	2400 Lumen	91 lm/W
AN0331S01	108 Mid Power LED	60.000 < L70*	6500 K	85	120 °	3600 Lumen	90 lm/W
AN0531S01	180 Mid Power LED	60.000 < L70*	6500 K	85	120 °	6150 Lumen	92 lm/W
AN0731S01	252 Mid Power LED	60.000 < L70*	6500 K	85	120 °	8300 Lumen	89 lm/W

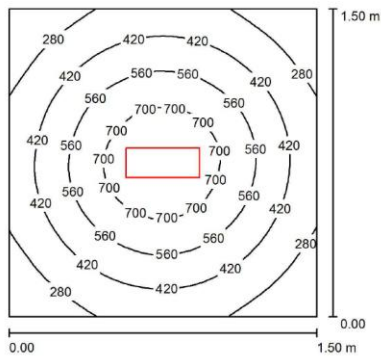
* Flow beam reduces by less than 30% after 60.000 hours

PHOTOMETRIC DIAGRAMS

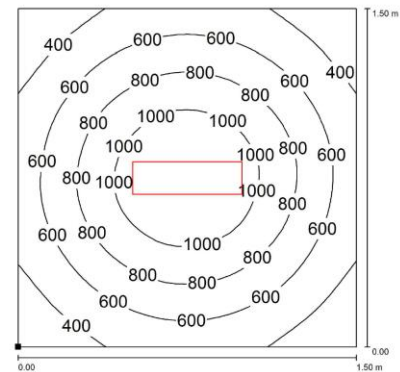
120° Flow beam



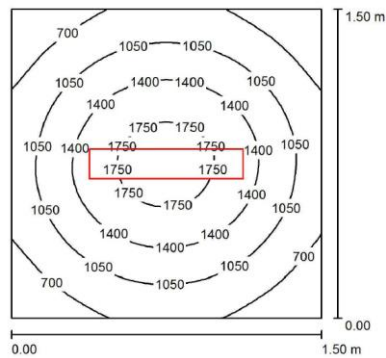
AN0231S01



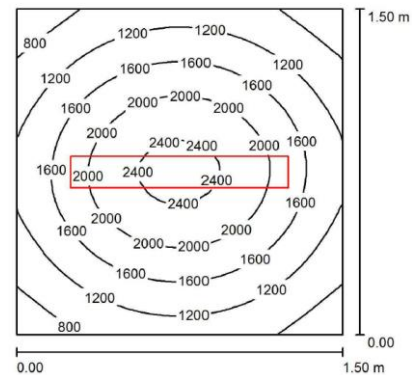
AN0331S01



AN0531S01



AN0731S01



Distance: 3.66 ft. / 1m

ORDER CODES

Model	Description
AN0231S01	ANTARIO 13.98" (355 mm), 26.5 W, 24 Vdc, Cord. 10ft (3 m)
AN0331S01	ANTARIO 19.06" (484 mm) 40 W, 24 Vdc, Cord. 10ft (3 m)
AN0531S01	ANTARIO 29.22" (742 mm) 66.5 W, 24 Vdc, Cord. 10ft (3 m)
AN0731S01	ANTARIO 39.37" (1000 mm) 93 W, 24 Vdc, Cord. 10ft (3 m)



II3G Ex nA IIC T5 Gc
II3D Ex t IIIC T90°C Dc