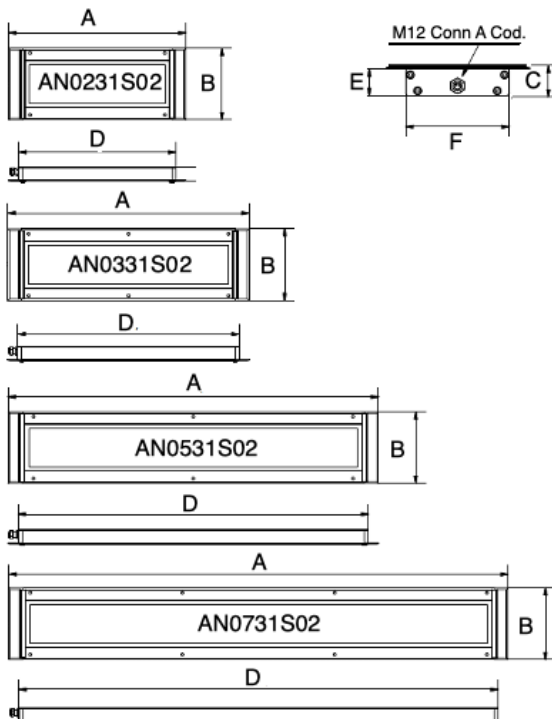




ANTARIO is the **Recessed Machine Light** designed with the State-of-the-art LED technology built-in a robust anodized aluminum housing, impenetrable to oil, coolants, emulsions, and Dust. The front Hardened safety glass is Debris resistant to IK07. The new concept of the glare-free optic diffuser combined with the designed circuits makes the Antario the most efficient and reliable luminaire series with the safest light output. Available in different sizes, Antario is the flush-mounted light solution that offers the highest illuminance in the slimmest casing for even the toughest CNC Machines, manufacturing, and automation applications.

- Robust anodized aluminum Housing
- Slim flush-mounted casing only 1.07" (27 mm)
- Flexible with 4 sizes and power usage
- IR / UV content, Flicker -free light
- Front hardened safety glass IK07
- Resistant to liquids and dust IP67
- Male M12 4 pin A Coding Standard construction
- Suitable for wet locations
- 120° beam angle, glare-free diffuser
- 60000 h < (L 70) Maintenance-free
- Daylight - CRI 85
- 24 Vdc Power Supply Integrated
- Fast installation
- Pre-assembled M12 Conn. with 16.66 ft cable on request

## DIMENSIONS



SIZE inches						
Model	A	B	C	D	E	F
AN0231S02	13.98	5.67	1.16	12.40	1.07	4.10
AN0331S02	19.06			17.48		
AN0531S02	29.22			27.64		
AN0731S02	39.37			37.80		

SIZE millimeters (mm)						
Model	A	B	C	D	E	F
AN0231S02	355	144	29.5	315	27	104
AN0331S02	484			444		
AN0531S02	742			702		
AN0731S02	1000			960		

## MECHANICAL FEATURES

Model	AN0231S02	AN0331S02	AN0531S02	AN0721S02
Casing Material	Aluminum			
Side Enclosers	Aluminum			
Surface Treatment	Silver anodization			
Front Glass	0.16" (4 mm) Hardened safety glass			
Weight	~ 3.55 lbs. ~ 1,60 kg	~ 5.10 lbs. ~ 2,30 kg	~ 7.70 lbs. ~ 3,50 kg	~ 9.95 lbs. ~ 4,50 kg
Protection Index	IP68- IP69			
Impact Resistance	under EN60079-0:2012 (Compatible with ANSI RP27.1)			
Operating Temperature	-20 °C to + 45 °C			
Installation	4 X 8-32 (US) or M5 screws	6 X 8-32 (US) or M5 screws	6 X 8-32 (US) or M5 screws	8 X 8-32 (US) or M5 screws

Choose the length of the screw according to the application, and the thickness of the installation surface.

## ELECTRICAL FEATURES

Model	AN0231S02	AN0331S02	AN0531S02	AN0721S02
Power usage	26,5 W	40 W	66,5 W	93 W
Power Supply	22 ÷ 36 Vdc			
Power Protection	Reverse polarity Protection			
Electrical Connection	M12 Connector. Male 4 pin A coding			
Insulation Class	Class III (SELV)			
Efficiency Class	A/A+/A++/A+++ (built-in LED module) compliant with UE Law No. 874/2012			

## CONNECTION with M12-4P Male A Coding

M12 Connector, Male, 4 Pin, A Coding, 4 Amp

Pin

Connection

1

(+) 24 Vdc

2

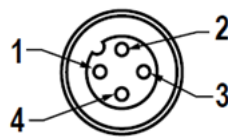
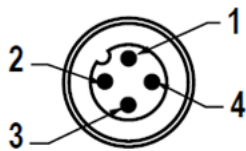
Not Connected

3

(-) 0

4

Not Connected



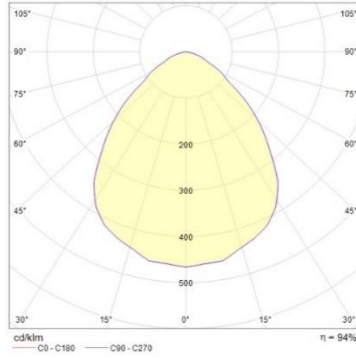
## OPTICAL FEATURES

Model	Number and Type of LED	LED Lifespan	Light Color	CRI	Beam Angle	Luminous Flux	Efficiency
AN0231S02	72 Mid Power LED	60.000 < L70*	6500 K	85	120 °	2400 Lumen	91 lm/W
AN0331S02	108 Mid Power LED	60.000 < L70*	6500 K	85	120 °	3600 Lumen	90 lm/W
AN0531S02	180 Mid Power LED	60.000 < L70*	6500 K	85	120 °	6150 Lumen	92 lm/W
AN0731S02	252 Mid Power LED	60.000 < L70*	6500 K	85	120 °	8300 Lumen	89 lm/W

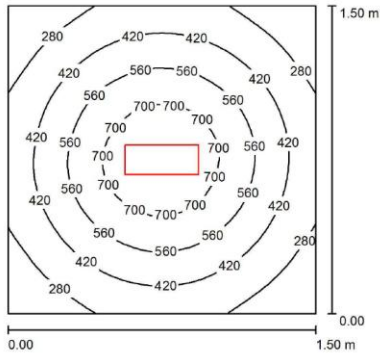
\* Flow beam reduces by less than 30% after 60.000 hours

# PHOTOMETRIC DIAGRAMS

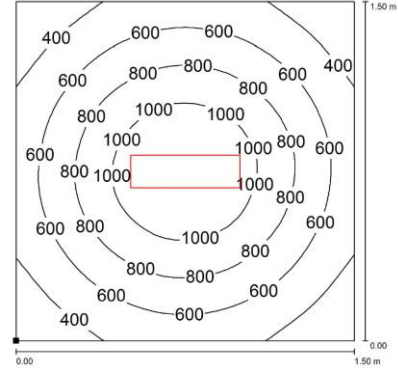
## 120° Flow beam



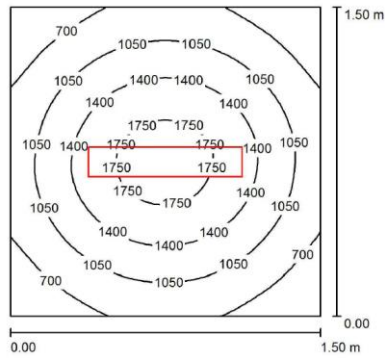
AN0231S02



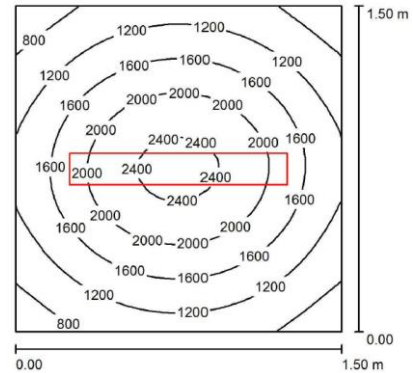
AN0331S02



AN0531S02



AN0731S02



Distance: 3.66 ft. / 1m

### ORDER CODES LUMINAIRES

Model	Description
AN0231S02	ANTARIO 13.98" (355 mm), 26.5 W, 24 Vdc, M12 Conn.
AN0331S02	ANTARIO 19.06" (484 mm) 40 W, 24 Vdc, M12 Conn.
AN0531S02	ANTARIO 29.22" (742 mm) 66.5 W, 24 Vdc, M12 Conn.
AN0731S02	ANTARIO 39.37" (1000 mm) 93 W, 24 Vdc, M12 Conn.

### ORDER CODES CABLES

M12AFC5	PRE-ASSEMBLED M12, 4 Pin, Female, A Coding, Cable 16,66 ft.
---------	---

