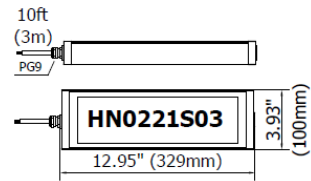
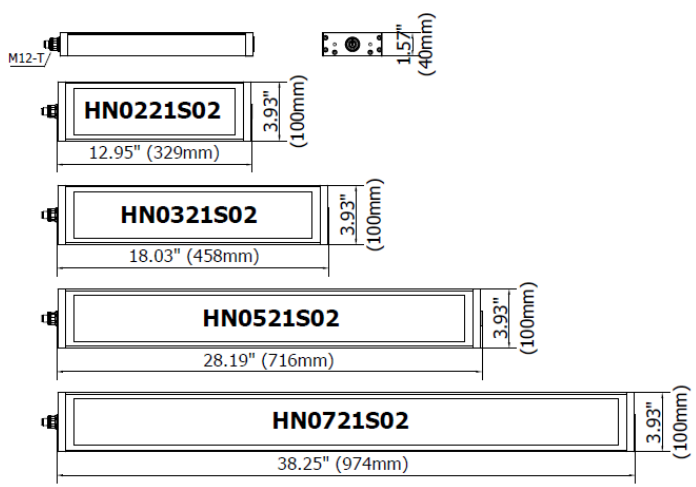


HERIO NOVA is the perfect combination of light and space for large machines. We have improved the performance of our brightest series, with a light even more uniform and diffused for the large industrial machines. HERIO NOVA includes 4 versions – 26.5W, 40W, 66.5W, and 93W – and the light flow is generated by combining high-efficiency mid Power LED circuits and a prismatic cone diffuser, which enhances its anti-glare effect but still maintains a constant flow of light. The I.D.S System (Integrated Driver System) allows a direct connection to 24 Vdc with no need for additional devices and the lamps are equipped with an M12 connector for a quick and easy connection.

LED lighting suitable for industrial applications, automation processes, medium and large sized CNC machines

- Exceptionally powerful luminous flux (up to 9800 lumens)
- Corrosion and vibration resistant
- Highly resistant to oils, coolants and metal shavings
- Full protection against infiltration of dust and liquids
- High degree of protection IP67
- Natural, efficient lighting for even surface illumination
- 50% energy savings and constant flow beam for 60.000 hours
- UV and IR free
- No additional devices needed
- Fast and secure plugging
- 4 model sizes
- 24 Vdc via M12 or 10ft. (3m) Cable for more flexibility
- Rear or side mounting brackets available
- Recommended for retrofitting
- Approval: cURus in compliance with UL2018 / CSA / CE

DIMENSIONS



Whit power cable version



MECHANICAL FEATURES

Model	HN0221S02	HN0221S03	HN0321S02	HN0321S03	HN0521S02	HN0521S03	HN0721S02	HN0721S03
Casing Material	Anodized extruded aluminum							
Side Enclosers	Anodized aluminum							
Surface Treatment	Standard: 10 microns of natural aluminum solution oxidation							
Front Glass	Extra clear tempered 0.16 in (54 mm) thick frosted glass IK06 with internal 0.12 in (3 mm). thick Anti-dazzling prismatic plexiglass (PMMA) diffuser							
Weight	3.20 lb. (1.45 kg)	3.64 lb. (1.65 kg)	5.07 lb. (2.30 kg)	5.51 lb. (2.50 kg)	7.50 lb. (3.40 kg)	7.94 lb. (3.60 kg)	10.03 lb. (4.55 kg)	10.47 lb. (4.75 kg)
Protection Index	IP67 Compatible with NEMA Type 12							
Impact Resistance	1.00 N m/s							
Operating Temperature	04°F (-20°C) to +113°F (+ 45°C)							
Installation	HNFx01 stainless steel side brackets kit, HNFx02 rear swivel bracket							

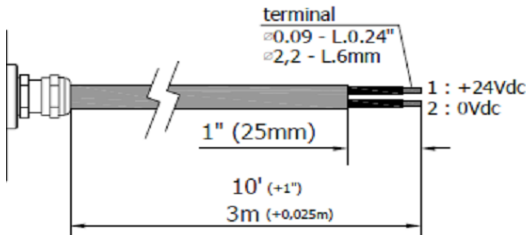
ELECTRICAL FEATURES

Model	HN0221S02	HN0221S03	HN0321S02	HN0321S03	HN0521S02	HN0521S03	HN0721S02	HN0721S03
Power Input	26.5 W		40 W		66.5 w		93 W	
Power Supply	22-36 Vdc							
Current	1.10 A @ 24 Vdc		1.67 A @ 24 Vdc		2.77 A @ 24 Vdc		3.88 A @ 24 Vdc	
Device Power Protection	Full protection against reverse polarity							
Electrical Connection	M12	Cable	M12	Cable	M12	Cable	M12	Cable
Insulation Class	Class III (SELV)							
Efficiency Class	A/A+/A++/A+++ (Integrated LED module) compliant with UE Law No. 874/2012							

CONNECTION* with M12-4P Male T Coding

Male	Female	Pin	Connection
		1	+24 Vdc
		2	Not Connected
		3	0 Vdc
		4	Not Connected

CONNECTION* with 10 ft. (3m) Cable, Standard length

PVC 2x 0.17 in ² (0.75 mm ²) L= 10 ft. (3 m)	Conductor	Connection
	1 Black	+24 Vdc
	2 Black	0 Vdc

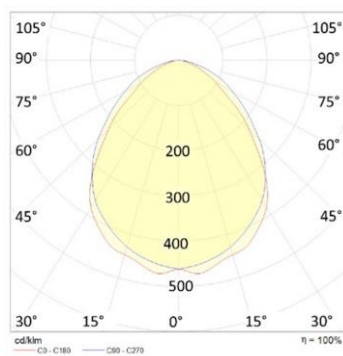
OPTICAL FEATURES

Model	N° and Type of LEDs	LED Lifespan	Light Color	CRI	Light Beam Angle	Luminous Flux	Efficiency
HN0221S02	72 Mid Power LED	60,000 H L70 **	5000 K	80	120°	2400 lm	90 lm/W
HN0221S03	72 Mid Power LED	60,000 H L70 **	5000 K	80	120°	2400 lm	90 lm/W
HN0321S02	108 Mid Power LED	60,000 H L70 **	5000 K	80	120°	3600 lm	90 lm/W
HN0321S03	108 Mid Power LED	60,000 H L70 **	5000 K	80	120°	3600 lm	90 lm/W
HN0521S02	180 Mid Power LED	60,000 H L70 **	5000 K	80	120°	6000 lm	90 lm/W
HN0521S03	180 Mid Power LED	60,000 H L70 **	5000 K	80	120°	6000 lm	90 lm/W
HN0721S02	252 Mid Power LED	60,000 H L70 **	5000 K	80	120°	8400 lm	90 lm/W
HN0721S03	252 Mid Power LED	60,000 H L70 **	5000 K	80	120°	8400 lm	90 lm/W

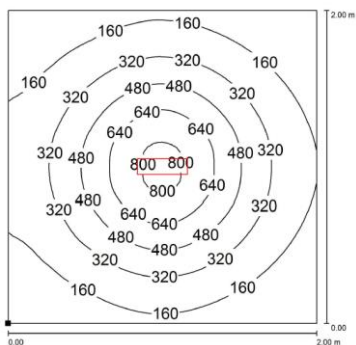
** Flow beam reduced by less than 30% after 60,000 hours

PHOTOMETRIC DIAGRAMS

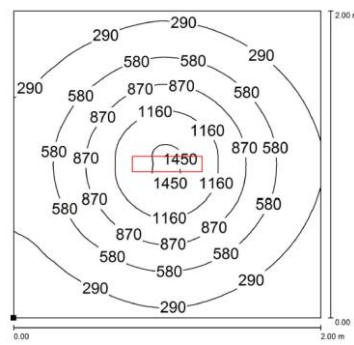
120° Flow beam



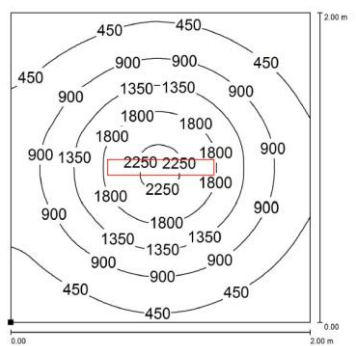
HN0221S02
HN0021S03



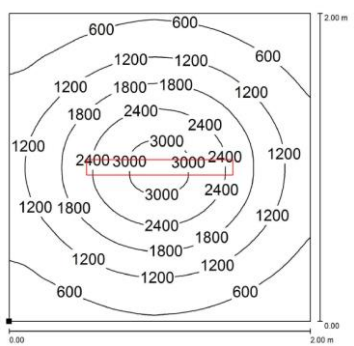
HN0321S02
HN0321S03



HN0521S02
HN0521S03




HN0721S02
HN0721S03






Distance graphic: 1m

PLUG OPTION M12 Cable Connector

Product pictures	Description	Code product
	M12; PIN: 4; female; T Code-Power; Straight for cable \varnothing 0.32-0.39 (8-10 mm); screw terminal	N13110001040302

MOUNTING OPTIONS

Product pictures	Description	Code product
	Robust, versatile and vibration resistant, it is a 45° angle adjustment bracket. Made of chrome-plated stainless steel, it is the perfect solution when you need to adjust the direction of the flow beam in high-vibrating applications. <i>Product code includes a couple of brackets with M6 fixing screws and steel handle washers.</i>	HNFX01
	Sturdy and vibration resistant, it is a 40° articulated bracket designed for rear mounting. Made of painted stainless steel (arm) and aluminum holder in black. It is a perfect choice when an unusual flow beam direction position is required.	HNFX02
	You also have the possibility to add a frame to make the Herionova <u>recessed</u>	HNFX03 HNFX04 HNFX05 HNFX06

ORDER CODES

Model	Description
HN0221S02	HERIONOVA, 12.95"(329mm), 120°, 26.5W, 24Vdc, M12-T 4P Male
HN0221S03	HERIONOVA, 12.95"(329mm), 120°, 26.5W, 24Vdc, Cable 10ft(3m)
HN0321S02	HERIONOVA, 18.03"(458mm), 120°, 40W, 24Vdc, M12-T 4P Male
HN0321S03	HERIONOVA, 18.03"(458mm), 120°, 40W, 24Vdc, Cable 10ft(3m)
HN0521S02	HERIONOVA, 28.19"(716mm), 120°, 66.5W, 24Vdc, M12-T 4P Male
HN0521S03	HERIONOVA, 28.19"(716mm), 120°, 66.5W, 24Vdc, Cable 10ft(3m)
HN0721S02	HERIONOVA, 38.35"(974mm), 120°, 93W, 24Vdc, M12-T 4P Male
HN0721S03	HERIONOVA, 38.35"(974mm), 120°, 93W, 24Vdc, Cable 10ft(3m)
HNFX01	HERIONOVA, stainless steel side brackets kit, 45°
HNFX02	HERIONOVA, stainless steel rear swivel bracket
N13110001040302	M12; PIN: 4; female; T Code-Power; Straight for cable \varnothing 0.32-0.39 (8-10 mm); screw terminal