

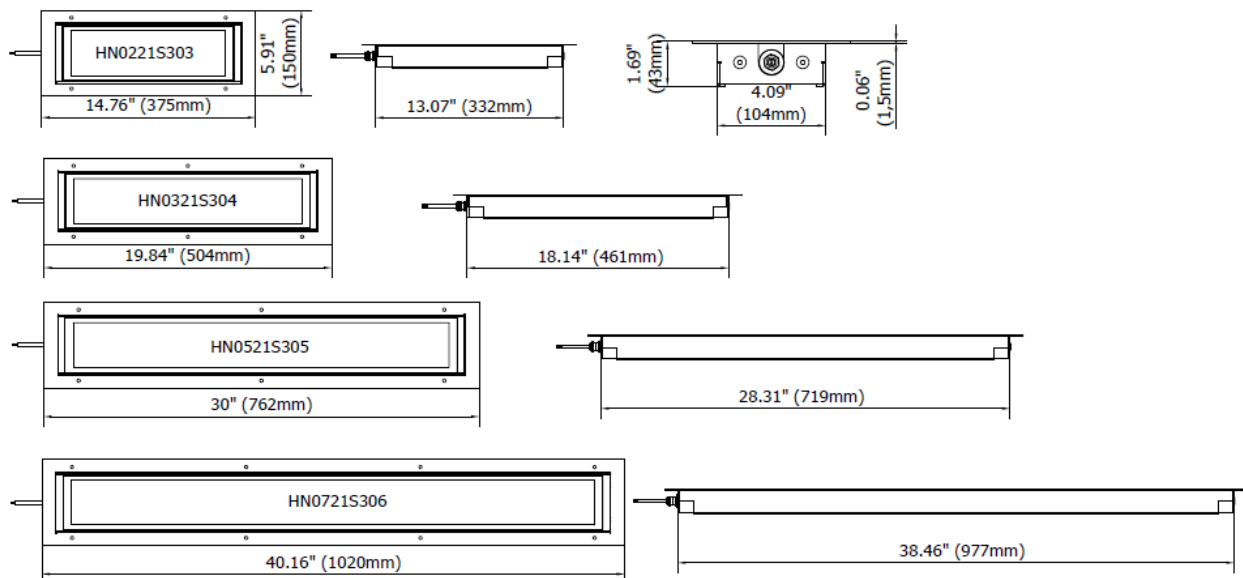


HERIO NOVA is the perfect combination of light and space for large machines. We have improved the performance of our brightest series, with a light even more uniform and diffused for the large industrial machines. HERIO NOVA includes 4 versions – 26.5W, 40W, 66.5W, and 93W – and the light flow is generated by combining high-efficiency mid Power LED circuits and a prismatic cone diffuser, which enhances its anti-glare effect but still maintains a constant flow of light. The I.D.S System (Integrated Driver System) allows a direct connection to 24 Vdc with no need for additional devices and the lamps are equipped with an M12 connector for a quick and easy connection.

LED lighting suitable for industrial applications, automation processes, medium and large sized CNC machines

- Structure made entirely of anodized aluminum
- Width of 5.91 in (150 mm)
- 4 lengths from 14.76 in (375 mm) to 40.16 in (1020 mm) to meet every need
- Protection Index IP67
- Operating temperature from -04°F (-20°C) to +113°F (+ 45°C)
- 120° diffused flow beam
- LED lifespan (L 70) > 60,000 h
- Light color 5000 K - CRI 80
- 24 Vdc via M12 or 10ft. (3m) Cable for more flexibility
- Become recessed for a simple and quick to installation with Anodized Aluminum Frame

## DIMENSIONS





## MECHANICAL FEATURES

Model	HN0221S0203	HN0221S0303	HN0321S0204	HN0321S0304	HN0521S0205	HN0521S0305	HN0721S0206	HN0721S0306
Casing Material	Anodized extruded aluminum							
Side Enclosers	Anodized aluminum							
Surface Treatment	Standard: 10 microns of natural aluminum solution oxidation							
Front Glass	Extra clear tempered 0.16 in (54 mm) thick frosted glass IK06 with internal 0.12 in (3 mm). thick Anti-dazzling prismatic plexiglass (PMMA) diffuser							
Weight	3.75 lb. (1.70 kg)	4.19 lb. (1.90 kg)	5.73 lb. (2.60 kg)	6.17 lb. (2.80 kg)	8.38 lb. (3.80 kg)	8.82 lb. (4.00 kg)	11.24 lb. (5.10 kg)	11.68 lb. (5.30 kg)
Protection Index	IP67 Compatible with NEMA Type 12							
Impact Resistance	1.00 N m/s							
Operating Temperature	04°F (-20°C) to +113°F (+ 45°C)							
Installation	Recessed mounting with 10-24 (M5) screws							

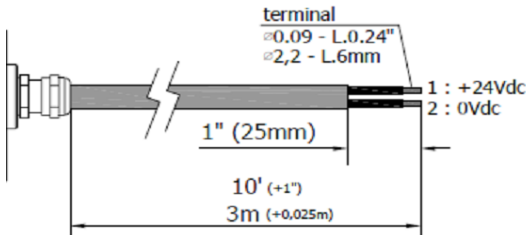
## ELECTRICAL FEATURES

Model	HN0221S0203	HN0221S0303	HN0321S0204	HN0321S0304	HN0521S0205	HN0521S0305	HN0721S0206	HN0721S0306
Power Input	26.5 W		40 W		66.5 w		93 W	
Power Supply	22-36 Vdc							
Current	1.10 A @ 24 Vdc		1.67 A @ 24 Vdc		2.77 A @ 24 Vdc		3.88 A @ 24 Vdc	
Device Power Protection	Full protection against reverse polarity							
Electrical Connection	M12	Cable	M12	Cable	M12	Cable	M12	Cable
Insulation Class	Class III (SELV)							
Efficiency Class	A/A+/A++/A+++ (Integrated LED module) compliant with UE Law No. 874/2012							

## CONNECTION\* with M12-4P Male T Coding

Male	Female	Pin	Connection
		1	+24 Vdc
		2	Not Connected
		3	0 Vdc
		4	Not Connected

## CONNECTION\* with 10 ft. (3m) Cable, Standard length

PVC 2x 0.17 in <sup>2</sup> (0.75 mm <sup>2</sup> ) L= 10 ft. (3 m)	Conductor	Connection
	1 Black	+24 Vdc
	2 Black	0 Vdc

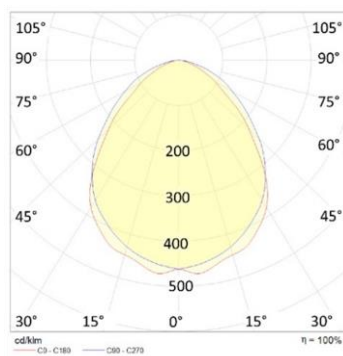
## OPTICAL FEATURES

Model	N° and Type of LEDs	LED Lifespan	Light Color	CRI	Light Beam Angle	Luminous Flux	Efficiency
HN0221S0203	72 Mid Power LED	60,000 H L70 **	5000 K	80	120°	2400 lm	90 lm/W
HN0221S0303	72 Mid Power LED	60,000 H L70 **	5000 K	80	120°	2400 lm	90 lm/W
HN0321S0204	108 Mid Power LED	60,000 H L70 **	5000 K	80	120°	3600 lm	90 lm/W
HN0321S0304	108 Mid Power LED	60,000 H L70 **	5000 K	80	120°	3600 lm	90 lm/W
HN0521S0205	180 Mid Power LED	60,000 H L70 **	5000 K	80	120°	6000 lm	90 lm/W
HN0521S0305	180 Mid Power LED	60,000 H L70 **	5000 K	80	120°	6000 lm	90 lm/W
HN0721S0206	252 Mid Power LED	60,000 H L70 **	5000 K	80	120°	8400 lm	90 lm/W
HN0721S0306	252 Mid Power LED	60,000 H L70 **	5000 K	80	120°	8400 lm	90 lm/W

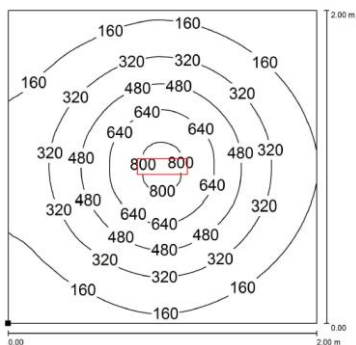
\*\* Flow beam reduced by less than 30% after 60,000 hours

## PHOTOMETRIC DIAGRAMS

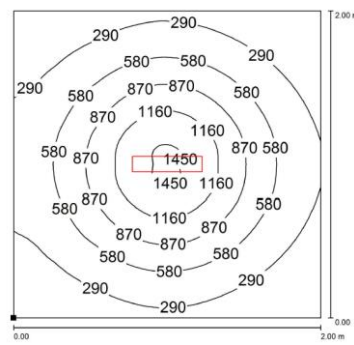
120° Flow beam



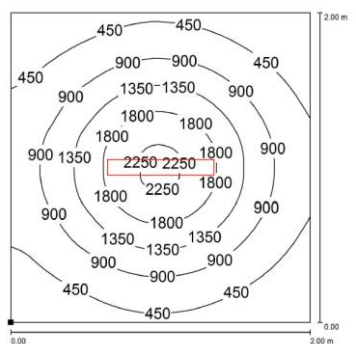
HN0221S0203  
HN0221S0303



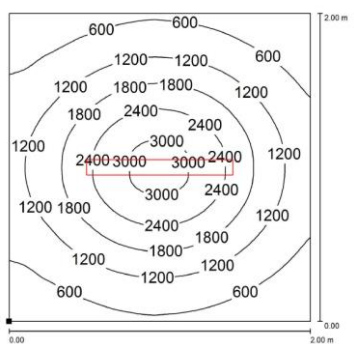
HN0321S0204  
HN0321S0304



HN0521S0205  
HN0521S0305




HN0721S0206  
HN0721S0306




Distance graphic: 1m

## PLUG OPTION M12 Cable Connector

Product pictures	Description	Code product
	M12; PIN: 4; female; T Code-Power; Straight for cable $\varnothing$ 0.32-0.39 (8-10 mm); screw terminal	N13110001040302

## MOUNTING OPTIONS

Product pictures	Description	Code product
	HERIONOVA, anodized frame	HNFX03 HNFX04 HNFX05 HNFX06

## ORDER CODES

Model	Description
HN0221S0203	HERIONOVA, 12.95"(329mm), 120°, 26.5W, 24Vdc, M12-T 4P Male + HERIONOVA, ANODIZED FRAME 375x150mm
HN0221S0303	HERIONOVA, 329mm, 120°, 26.5W, 24Vdc, CABLE 3mt + HERIONOVA, ANODIZED FRAME 375x150mm
HN0321S0204	HERIONOVA, 18.03"(458mm), 120°, 40W, 24Vdc, M12-T 4P Male + HERIONOVA, ANODIZED FRAME 504x150mm
HN0321S0304	HERIONOVA, 458mm, 120°, 40W, 24Vdc, CABLE 3mt + HERIONOVA, ANODIZED FRAME 504x150mm
HN0521S0205	HERIONOVA, 28.19"(716mm), 120°, 66.5W, 24Vdc, M12-T 4P Male + HERIONOVA, ANODIZED FRAME 762x150mm
HN0521S0305	HERIONOVA, 716mm, 120°, 66.5W, 24Vdc, CABLE 3mt + HERIONOVA, ANODIZED FRAME 762x150mm
HN0721S0206	HERIONOVA, 38.35"(974mm), 120°, 93W, 24Vdc, M12-T 4P Male + HERIONOVA, ANODIZED FRAME 1020x150mm
HN0721S0306	HERIONOVA, 974mm, 120°, 93W, 24Vdc, CABLE 3mt + HERIONOVA, ANODIZED FRAME 1020x150mm
HNFX03	HERIONOVA, anodized frame 375x150mm
HNFX04	HERIONOVA, anodized frame 504x150mm
HNFX05	HERIONOVA, anodized frame 762x150mm
HNFX06	HERIONOVA, anodized frame 1020x150mm
N13110001040302	M12; PIN: 4; female; T Code-Power; Straight for cable $\varnothing$ 0.32-0.39 (8-10 mm); screw terminal