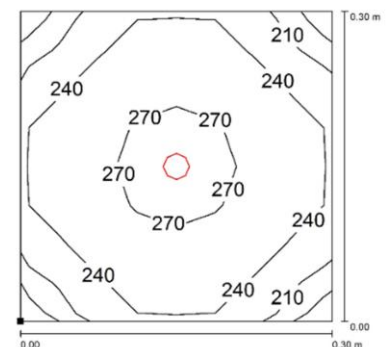
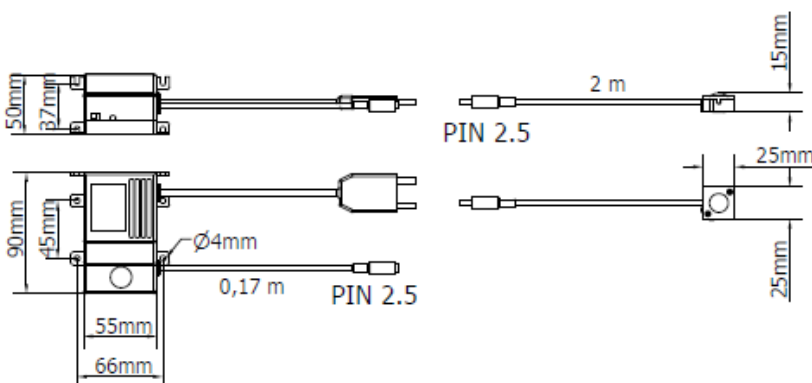


A5LED1W FEATURES (LED driver)

| | |
|-----------------------|-----------------------------------|
| Power usage | 2 W |
| Power supply | 230 Vac |
| Light source | - |
| Electrical connection | Europlug + 2.5 mm DC power socket |
| Color temperature | -, CRI - |
| Luminous flux | - lm |
| Efficiency | - lm/W |
| Light beam angle | - |
| Housing | ABS |
| Protection index | IP40 |
| Front protection | - |
| Impact resistance | - |
| Operating temperature | -20°C to + 45°C (-04°F to +113°F) |
| Weight | 0,40 kg (0,82 lb) |
| Agency approvals | CE, RoHS |
| Mounting | Screw |

L3LED FEATURES (LED)

| | |
|-----------------------|-----------------------------------|
| Power usage | 2 W |
| Power supply | 3.8 Vdc |
| Light source | LED |
| Electrical connection | 2.5 mm DC power plug |
| Color temperature | 5000 K, CRI 80 |
| Luminous flux | 170 lm |
| Efficiency | 85 lm/W |
| Light beam angle | 120° |
| Housing | ABS |
| Protection index | IP40 |
| Front protection | Polycarbonate |
| Impact resistance | - |
| Operating temperature | -20°C to + 45°C (-04°F to +113°F) |
| Weight | 0,05 kg (0,07 lb) |
| Agency approvals | CE, RoHS |
| Mounting | Magnetic |



NOTE: Installazione height: 0,3m