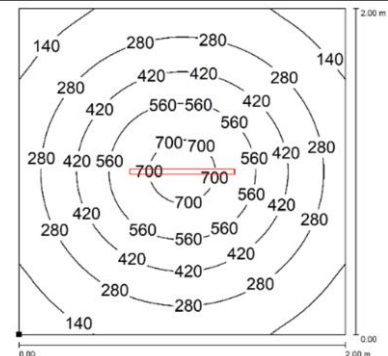
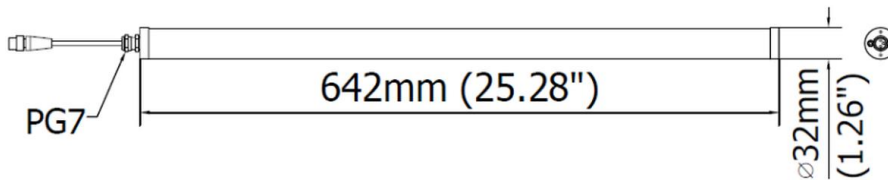




PRODUCT FEATURES

Power usage	20 W
Power supply	24 Vdc
Light source	LED
Electrical connection	Cable 3m (10ft) with M12A-3P Male
Color temperature	5000K, CRI 80
Luminous flux	2400 lm
Efficiency	120 lm/W
Light beam angle	120°
Housing	Anodized aluminum
Front protection	Transparent polymethylmethacrylate
Protection index	IP67
Impact resistance	IK06
Operating temperature	-20°C to + 45°C (-04°F to +113°F)
Weight	0,60 kg (1,26 lb)
Agency approvals	CE, RoHS
Mounting	TDFX01, B05



NOTE: Installation Height: 1m