

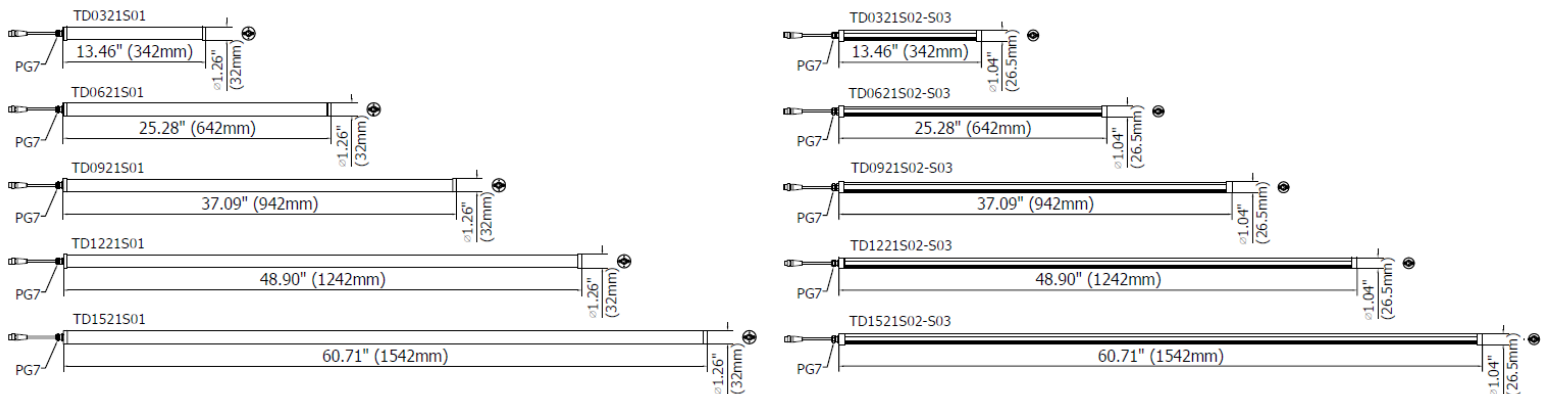


TEIDE is a series of compact, lean LED lighting designed for Electric cabinets, beverage machines, and CNC routers. Highly efficient flow beam is delivered using the latest LED Technology. Side Kit-Bracket or clips allow a secure mounting and flexible adjustment of the light flow direction up to 70°. Five different lengths offer installation choices for a variety of uses. Ideal for workplaces where space is minimal but high performance and intense lighting are required.

The compact body allows easy integration into existing systems while providing exceptional energy efficiency and low-voltage operation.

- Heatsink-Body made of anodized aluminum
- 0.94 inch (24 mm) wide or 1.18 inch (30 mm) wide
- Cover Frosted Polycarbonate, or Clear Acrylic
- 5 models from 5 to 50W to meet different work-area criteria
- 120° Light beam to provide wide and intense illumination
- LED lifespan: 60,000 hours constantly > (L 70)
- 24Vdc via M12-connector
- Light color temperature 5000 K -- CRI 80

## DIMENSIONS



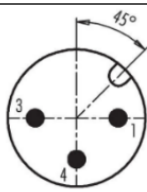
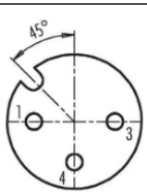
## MECHANICAL FEATURES

Model	TD0321S01	TD0321S02	TD0621S01	TD0621S02	TD0921S01	TD0921S02	TD1221S01	TD1221S02	TD1521S01	TD1521S02
Heatsink	Aluminum									
Side Caps	Stainless steel									
Surface Treatment										
Front Glass	Acrylic	PC frosted opaque	Acrylic	PC frosted opaque	Acrylic	PC frosted opaque	Acrylic	PC frosted opaque	Acrylic	PC frosted opaque
Weight	0.95 lb (0.45kg)	0.77 lb (0.35kg)	1.43 lb (0.65kg)	1,10 lb (0.50kg)	1.76 lb (0.80kg)	1.54 lb (0,7kg)	2.40 lb (1,10kg)	2.20 lb (1.00kg)	3.31 lb (1.50kg)	2.87 lb (1.30kg)
Protection Index	IP67	IP54	IP67	IP54	IP67	IP54	IP67	IP54	IP67	IP54
Impact Resistance										
Operating Temperature										

## ELECTRICAL FEATURES

Model	TD0321 S01	TD0321 S02	TD0621 S01	TD0621 S02	TD0921 S01	TD0921 S02	TD1221 S01	TD1221 S03	TD1521 S01	TD1521 S02
Power Input	10 W	10 W	20 W	20 W	30 W	30 W	40 W	20 W	50 W	50 W
Power Supply	22-26 Vdc									
Current	0,45 A	0,45 A	0,90 A	0,90 A	1.35 A	1.35 A	1,80 A	1,00 A	2,25 A	2,25 A
Electrical Service	M12 connector preassembled 10 ft (3m) cable									
Electrical Class	Class III (SELV)									
Efficiency Class	E (Integrated LED module) compliant with UE LAW No. 2019/2020									

## CONNECTION\* with M12-3P Male A Coding

	Male	Female	Pin	Connection
		1	+24 Vdc	
		3	0 Vdc	
		4	NOT CONNECTED	

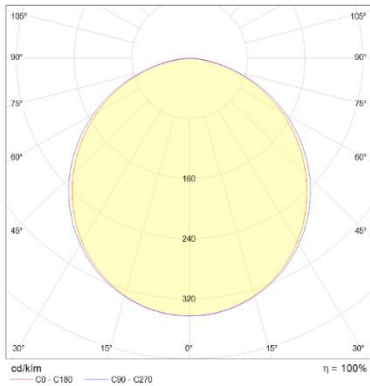
## OPTICAL FEATURES

Model	N° and Type of LEDs	LED Lifespan	Light Color	CRI	Light Beam Angle	Luminous Flux	Efficiency
TD0321S01	21 Mid Power LED	60 000 h L70 **	5000 K	80	120°	1200 lm	120 lm/W
TD0321S02	21 Mid Power LED	60 000 h L70 **	5000 K	80	120°	800 lm	80 lm/W
TD0621S01	42 Mid Power LED	60 000 h L70 **	5000 K	80	120°	2400 lm	120 lm/W
TD0621S02	42 Mid Power LED	60 000 h L70 **	5000 K	80	120°	1600 lm	80 lm/W
TD0921S01	63 Mid Power LED	60 000 h L70 **	5000 K	80	120°	3600 lm	120 lm/W
TD0921S02	63 Mid Power LED	60 000 h L70 **	5000 K	80	120°	2400 lm	80 lm/W
TD1221S01	84 Mid Power LED	60 000 h L70 **	5000 K	80	120°	4800 lm	120 lm/W
TD1221S02	84 Mid Power LED	60 000 h L70 **	5000 K	80	120°	3200 lm	80 lm/W
TD1521S01	105 Mid Power LED	60 000 h L70 **	5000 K	80	120°	6000 lm	120 lm/W
TD1521S02	105 Mid Power LED	60 000 h L70 **	5000 K	80	120°	4000 lm	80 lm/W

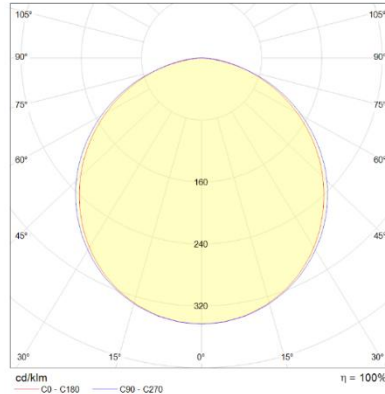
\*\* Flow beam reduced by less than 30% after 60,000 hours

# PHOTOMETRIC DIAGRAMS

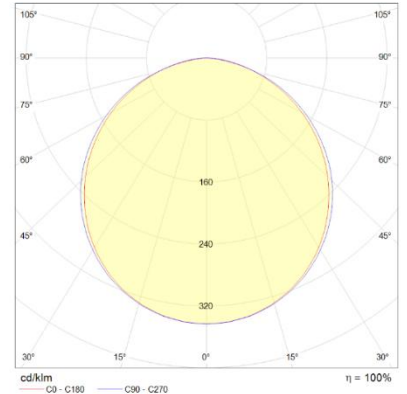
TDXX21S01 Flow beam



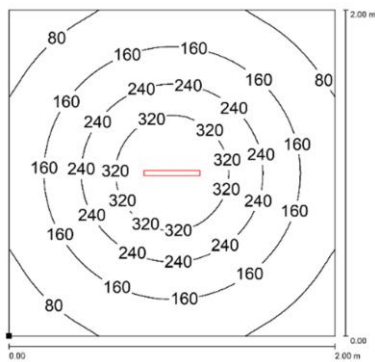
TDXX21S02 Flow beam



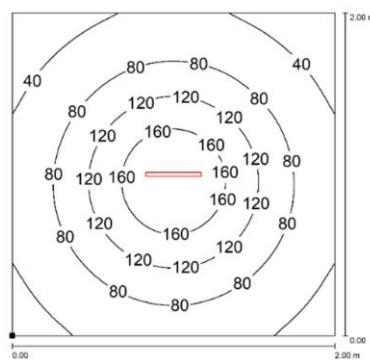
TDXX21S03 Flow beam



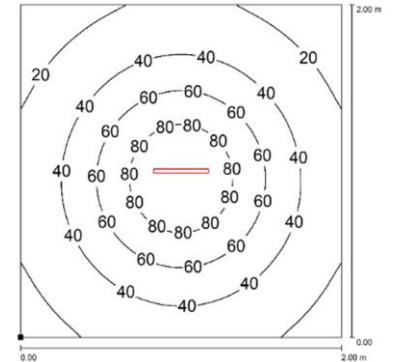
TD0321S01



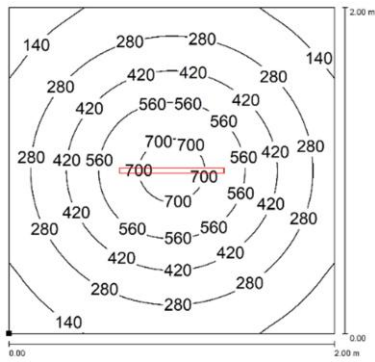
TD0321S02



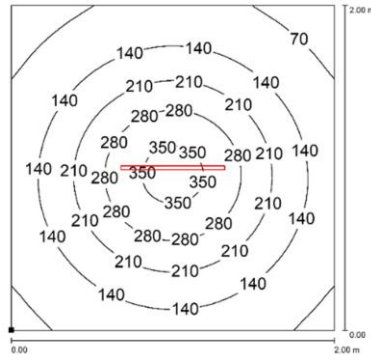
TD0321S03



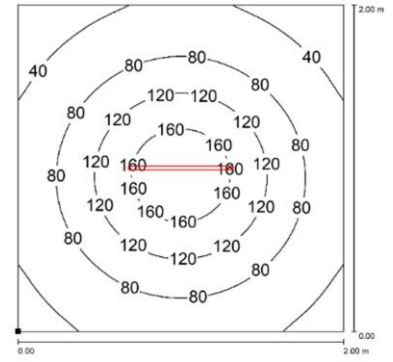
TD0621S01



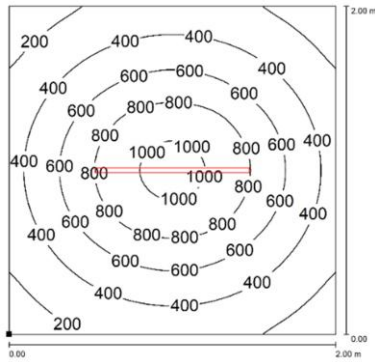
TD0621S02



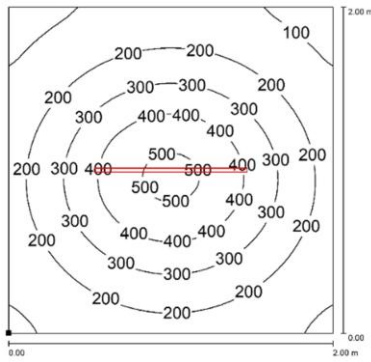
TD0621S03



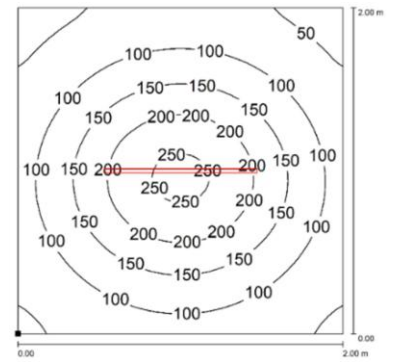
TD0921S01

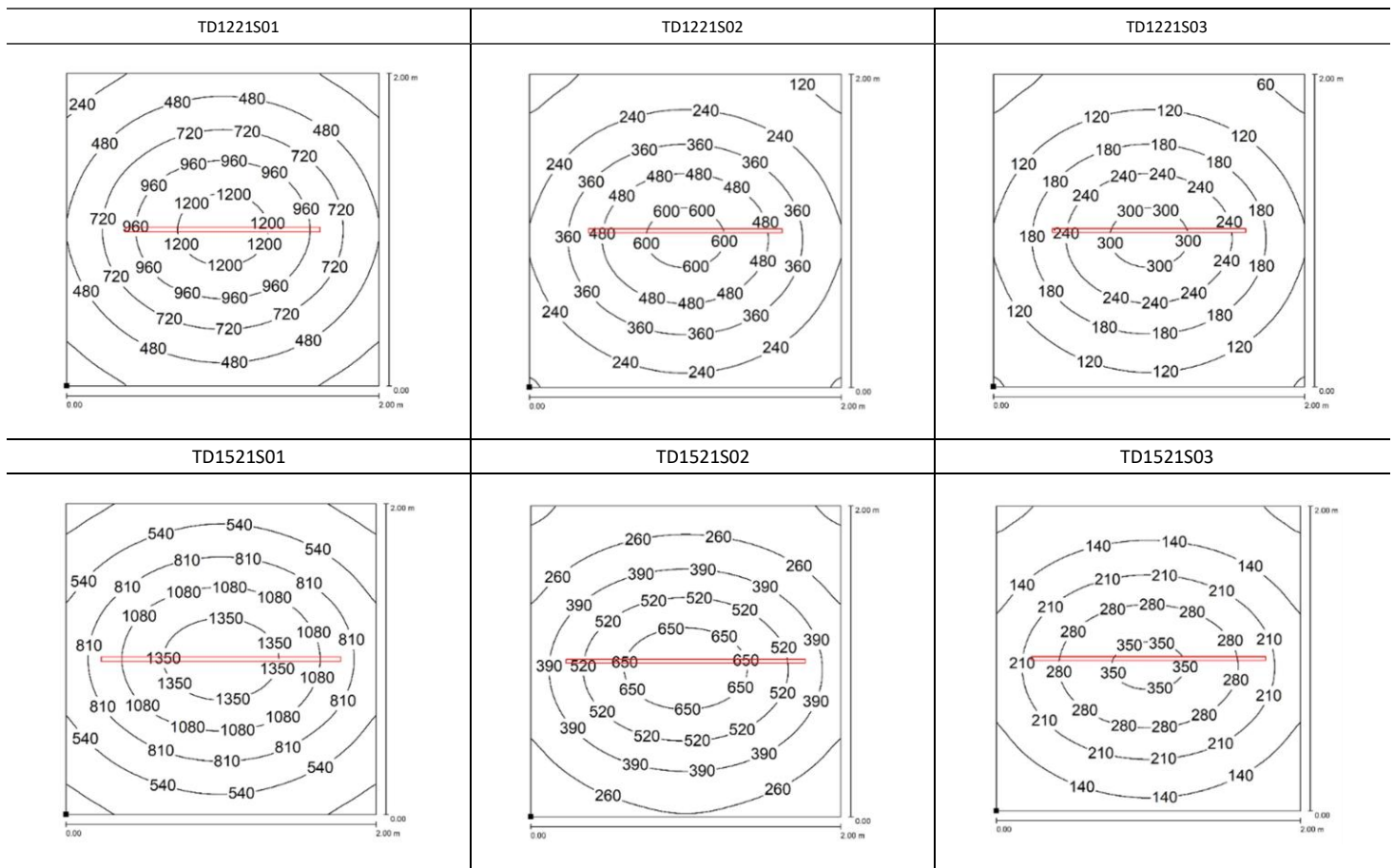


TD0921S02



TD0921S03





Distance graphic: 1m

## PLUG OPTION M12 Cable Connector

Product pictures	Description	Code product
	Pre-assembled M12 4Pin, female, A Coding, CABLE 5mt, UL	M12AFCS

## MOUNTING OPTIONS

Product pictures	Description	Code product
	<p>Robust, versatile and vibration resistant, it is a 70° angle adjustment bracket. Made of stainless steel, it is the perfect solution when you need to adjust the direction of the flow beam in high-vibrating applications.</p> <p><i>Product code – set is composed by two brackets with M3 screws and steel handle washers.</i></p>	TDFX01
	<p>Chrome-plated steel clip kit for diameter 0.94-1.18 in (24-30 mm). allow you to clip the lamp and adjust the direction of the flow beam.</p>	CLIP24
	<p>Strong magnetic disc made of neodymium and high grip. Use along with TDFX01 brackets when you need to move the light frequently and to different positions. Suitable to use in high-vibrating applications.</p>	B05

## ORDER CODES

Model	Description
TD0321S01	TEIDE Power S, 13.46"(342mm), Ø1.26"(32mm), 120°, 10W, 24vdc, Cable 10ft(3m) with M12-A 3P Male, PMMA. Tube
TD0321S02	TEIDE Power Q, 13.46"(342mm), Ø0.95"(24mm), 120°, 10W, 24vdc, Cable 10ft(3m) with M12-A 3P Male, Opal Polycarbonate
TD0621S01	TEIDE Power S, 25.28"(642mm), Ø1.26"(32mm), 120°, 20W, 24vdc, Cable 10ft(3m) with M12-A 3P Male, PMMA. Tube
TD0621S02	TEIDE Power Q, 25.28"(642mm), Ø0.95"(24mm), 120°, 20W, 24vdc, Cable 10ft(3m) with M12-A 3P Male, Opal Polycarbonate
TD0921S01	TEIDE Power S, 37.08"(942mm), Ø1.26"(32mm), 120°, 30W, 24vdc, Cable 10ft(3m) with M12-A 3P Male, PMMA. Tube
TD0921S02	TEIDE Power Q, 37.08"(942mm), Ø0.95"(24mm), 120°, 30W, 24vdc, Cable 10ft(3m) with M12-A 3P Male, Opal Polycarbonate
TD1221S01	TEIDE Power S, 48.90"(1242mm), Ø1.26"(32mm), 120°, 40W, 24vdc, Cable 10ft(3m) with M12-A 3P Male, PMMA. Tube
TD1221S02	TEIDE Power Q, 48.90"(1242mm), Ø0.95"(24mm), 120°, 40W, 24vdc, Cable 10ft(3m) with M12-A 3P Male, Opal Polycarbonate
TD1521S01	TEIDE Power S, 60.71"(1542mm), Ø1.26"(32mm), 120°, 50W, 24vdc, Cable 10ft(3m) with M12-A 3P Male, PMMA. Tube
TD1521S02	TEIDE Power Q, 60.71"(1542mm), Ø0.95"(24mm), 120°, 50W, 24vdc, Cable 10ft(3m) with M12-A 3P Male, Opal Polycarbonate
TDFX01	TEIDE POWER, Kit-Bracket side stainless steel
CLIP24	TEIDE, Kit-Clips chrome-plated steel, Ø24mm
B05	MAGNETIC Plate, Bolt M5 Ø30X9mm
M12AFC5	Pre-assembled M12 4Pin, female, A Coding, CABLE 5mt, UL