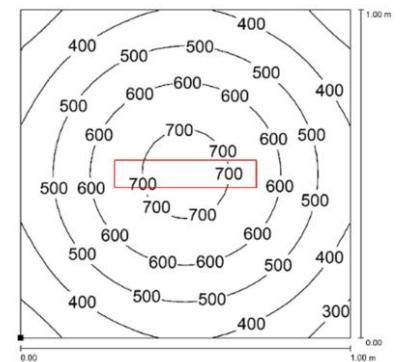
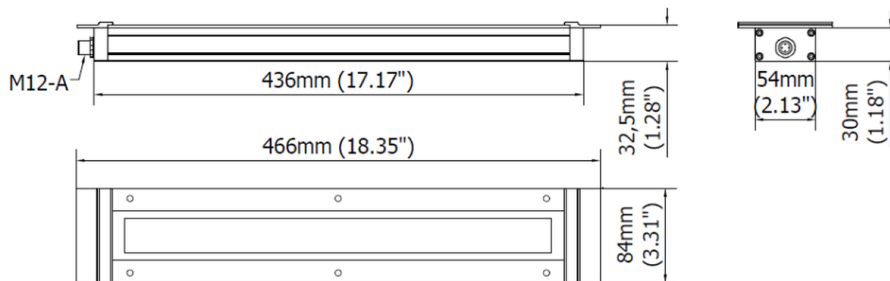




PRODUCT FEATURES

Power usage	19,5 W
Power supply	24 Vdc
Light source	LED
Electrical connection	M12-A 4P Male
Color temperature	5000K, CRI 80
Luminous flux	2000 lm
Efficiency	103 lm/W
Light beam angle	120°
Housing	Anodized aluminum
Front protection	Tempered satin glass
Protection index	IP67
Impact resistance	IK06
Operating temperature	-20°C to + 45°C (-04°F to +113°F)
Weight	1,15 kg (2,47 lb)
Agency approvals	CE, RoHS

Mounting



NOTE: Installation Height: 1m